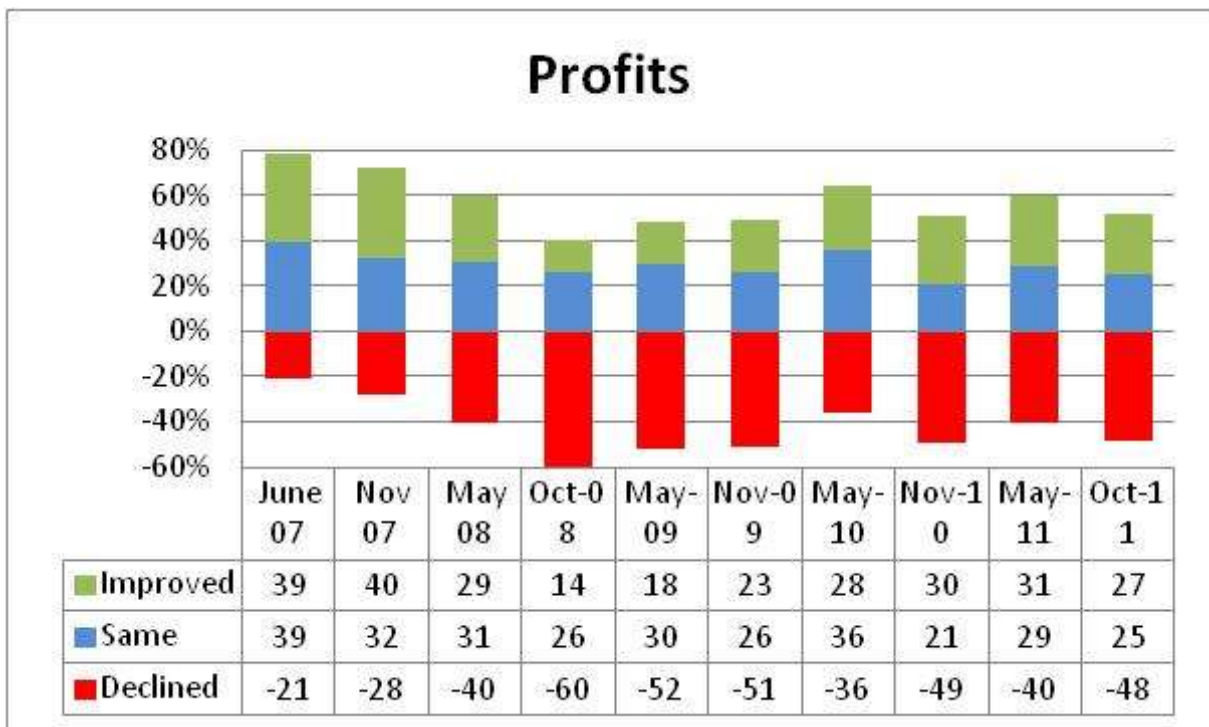
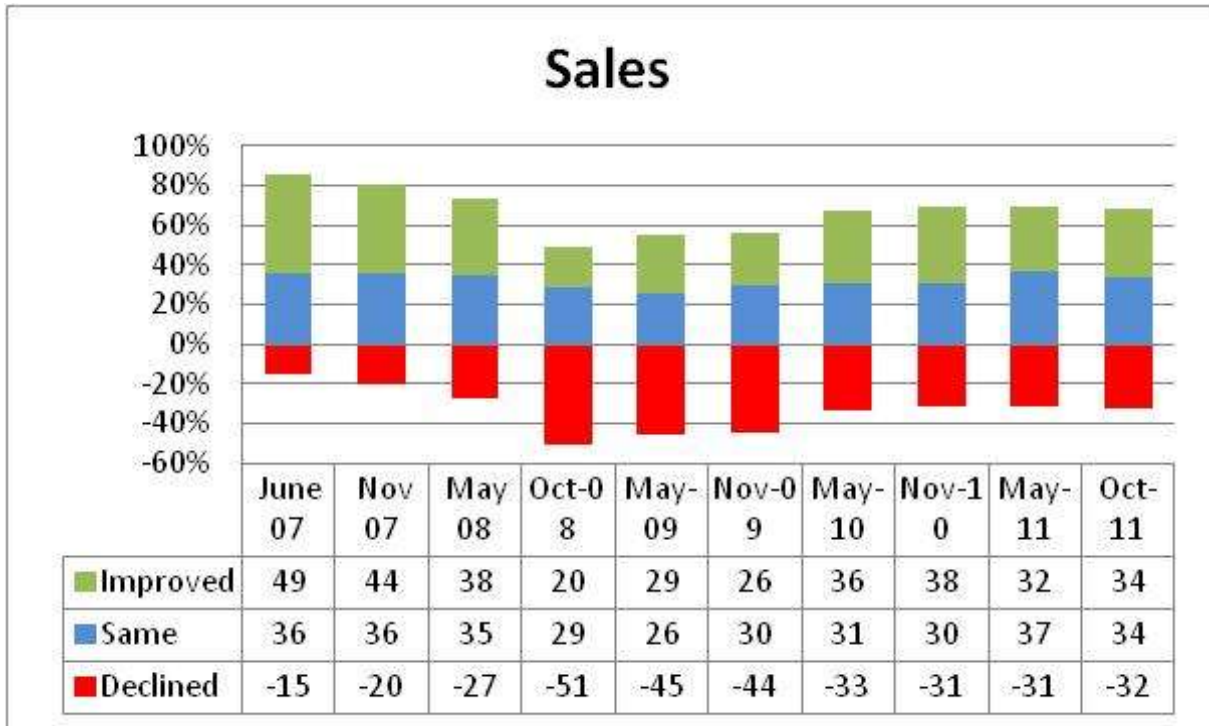




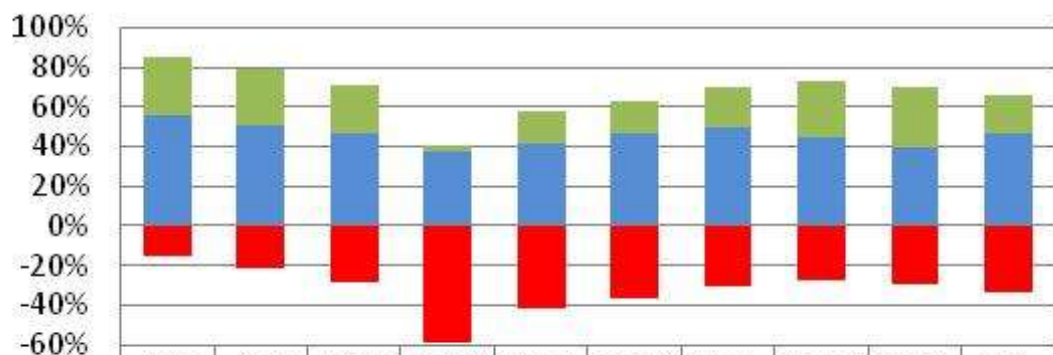
Federation of Small Businesses
Kent Small Business Barometer
Autumn 2011





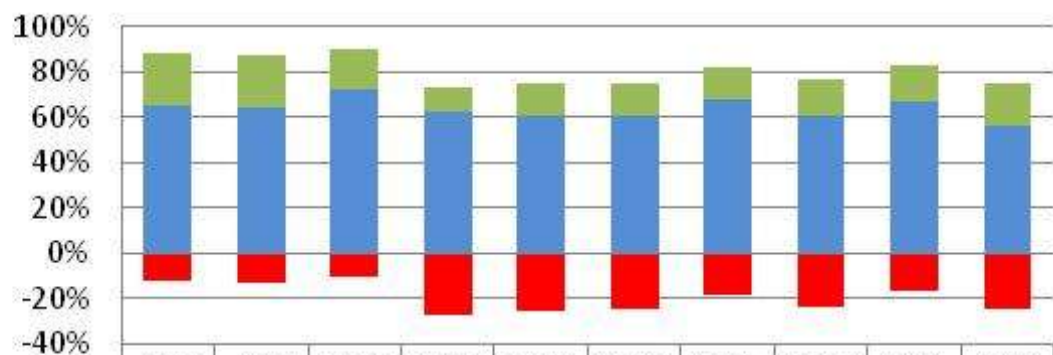
Federation of Small Businesses
Kent Small Business Barometer
Autumn 2011

Prospects



	June 07	Nov 07	May 08	Oct-08	May-09	Nov-09	May-10	Nov-10	May-11	Oct-11
Improved	29	28	24	4	16	16	20	28	30	19
Same	56	51	47	37	42	47	51	45	40	47
Declined	-15	-21	-29	-59	-42	-37	-31	-27	-30	-34

Staffing



	June 07	Nov 07	May 08	Oct-08	May-09	01-Nov	May-10	Nov-10	May-11	Oct-11
Improved	23	23	18	11	14	14	14	16	16	19
Same	65	64	72	62	59	61	68	61	67	56
Declined	-12	-13	-10	-27	-25	-25	-18	-24	-17	-25